

# CrystalView CAT5 Rack™



## KVM access over CAT5 cable

Extends the distance from 6 or 12 PC's up to 1,000 feet

Video resolutions up to 1600 x 1200

Single or dual models. Dual models provide an additional KVM station at the local unit

Serial and stereo audio options available on all 6-port models

Stereo audio and serial data can be transmitted in either direction across the CAT5 link simultaneously

## Features and Benefits

- Extend 6 or 12 KVM stations from 6 or 12 CPUs using single CAT5 twisted pair, solid core cable (Up to 1,000 feet)
- Video resolutions up to 1600 x 1200 at 200 feet, 1280 x 1024 at 300 feet, 1024 x 768 at 1,000 feet
- Compatible with Rose Electronics family or KVM switches such as ServeView Pro, UltraView Pro and UltraMatrix
- Compatible with Windows®, Windows NT®, OS/2®, Unix®, Linux® and other operating systems
- Fully automatic KVM sharing on a first-come, first-serve basis using the dual models
- Uses a microprocessor to emulate the keyboard and mouse. The keyboard and mouse on the Remote units do not have to be connected for the PC to boot; only the local units must be connected to the PC
- The local unit can invoke a private mode to inhibit usage of the remote unit (Dual models only)
- On the dual models, the connected computer's video is displayed on both the local and remote monitors
- Bi-directional serial and stereo audio options (Serial and audio models only)
- Stereo audio can be transmitted in either direction across the CAT5 link simultaneously (Serial and audio models only)
- Rack mountable chassis
- One year limited warranty

## The CrystalView CAT5 Rack Advantage . .

The CrystalView CAT5 Rack is the KVM extender of choice for businesses big and small that need to extend several KVM stations away from CPUs.

The CrystalView CAT5 Rack allows you to position 6 or 12 CPUs up to 1,000 feet away from the KVM stations using common twisted pair CAT5 cable. Each CrystalView module is completely independent from the other modules.

Access to your computers or servers is made convenient in a variety of situations. You can locate users away from hazardous industrial environments, locate CPUs away from areas vulnerable to theft of hardware and data, reduce noise and heat, increase desk space, and floor space.

The CrystalView CAT5 Rack is available in the following models.

- 6 – single local CrystalViews
- 6 – single local CrystalViews with serial and audio
- 6 – dual local CrystalViews
- 6 – dual local CrystalViews with serial and audio
- 12 – single local CrystalViews

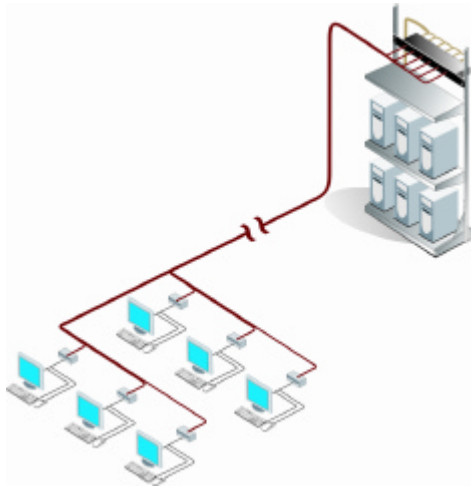
All models use a microprocessor to emulate the keyboard and mouse for plug and play operation. The keyboard and mouse on the Remote Unit do not have to be connected for the PC to boot; only the Local Unit

The CrystalView Rack is designed for plug-operation. Connect the computers, a KVM station, the CAT5 cable between the local and remote units, and its ready to use.



Standard CAT5 connectors

## Typical Application



**Introduction** – The CrystalView CAT5 Rack is a versatile and powerful product that extends the range of access to your computers up to 1,000 feet using industry standard CAT5 twisted pair cable.

The CrystalView system consists of the local CrystalView Rack and a remote unit for each local module used. The local unit connects to your computers, servers, or a Rose Electronics KVM switch. The remote unit connects to a keyboard, video monitor and mouse or KVM station. The local and remote units are connected together with industry standard CAT5 cable. Each CrystalView CAT5 rack module (6 or 12) connects to a remote CrystalView unit.

The dual models offer an additional KVM station connection at each local module. The local KVM station can have direct access to the connected computer or switch. The local user can invoke a private mode to inhibit the remote KVM station.

The serial and audio models support most standard serial devices and full stereo audio.

**Installation** – Installing the CrystalView CAT5 Rack unit is a very easy process. First, mount the CrystalView CAT5 Rack securely in your console rack. Next, connect each module (6 or 12) to a CPU's keyboard, monitor, and mouse ports using the appropriate CPU adapter cable. Connect a CAT5 cable between each module's RJ45 connector to a CrystalView remote unit's RJ45 connector. Connect a KVM station to the remote unit and power up the CPUs, and the remote unit.

When installing the serial and audio model, connect stereo audio speakers and a microphone to the audio jacks, and a serial device to the serial port.

**Operation** - Once the Remote and Local Unit modules are connected and configured, the Remote KVM station's keyboard, video monitor and mouse will function as if it were directly connected to the CPU. All applications, upgrades and PC configurations can be performed normally.

The Local unit is active during boot-up. To activate a KVM station, simply press a key or move the mouse. A lockout feature disables activity from a KVM station until the "In Use" station is inactive for more than 2 seconds.

## Part Numbers

CRV-6SLP	6-Single local units
CRV-6SLP/AUD	6-Single local units with serial and audio
CRV-6DLP	6-Dual local units
CRV-6DLP/AUD	6-Dual local units with serial and audio
CRV-12SLP	12-Single local units
CRV-R	Remote unit
CRV-R/AUD	Remote unit / serial and audio
CRV-MR	Mini Remote unit**
CRV-MR/AUD	Mini Remote unit with serial and audio**
CAB-08UTPnnn*	Cable - CAT5 UTP (25-1,000 feet)
CAB-CX0606Cnnn*	Cable (coax) - To CPU or KVM switch (PS/2)
CAB-ZX0606Cnnn*	Cable (std) - To CPU or KVM switch (PS/2)
CAB-CXVSMnnn*	Cable - To KVM switch (DB25 connectors)
CAB-D9MFnnn*	Cable -Local to CPU serial port
CAB-SPMMnnn*	Cable - 3.5mm stereo audio
TFR-05D200FSUB	Optional 5.0 V power adapter.
* nn = length in feet	** Max length = 150' using the Mini remote

## Specifications

Dimensions	Width	Depth	Height	Weight
1U models	17in	4.2in	1.75in	3.75 - 4.00lbs
2U model	17in	4.2in	3.50in	5.00 - 5.50lbs
Chassis	Aluminum			
Resolution < 200'	1600 x 1200			
200' - 300'	1280 x 1024			
300' - 1,000'	1024 x 768			
Connectors	DB25F			
CPU in	HD15F			
Video out	PS/2 - MiniDIN-6			
Keyboard	PS/2 - MiniDIN-6			
Mouse	PS/2 - MiniDIN-6			
Serial	DB9F			
Audio	3.5mm stereo jack			
CAT5	RJ45			
Power	Optional 5VDC external power adapter			
Serial Data	Baud rate Up to 19,200			
	Data flow - Format independent			
	Flow control - RTS, CTS, DTR, DSR			
Audio Data	Signal level - 5V p-p			
	Impedance - 47KΩ			
	Transmission - 16 bit, 38.4KHZ - Digitized audio			
	Microphone - Powered or un-powered			
	Speakers - Powered			
Environmental	0°C - 45°C / 0% - 80% RH non-condensing			



6-Single, 12-Single, 6-Single serial/audio, 6-Dual, 6-Dual serial/audio