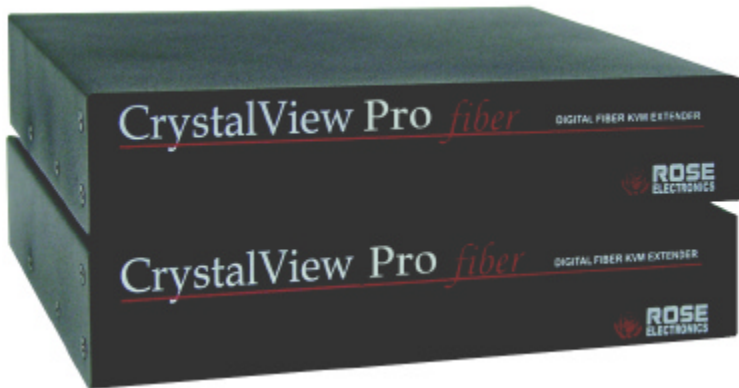


CrystalView Pro *fiber*™



Digital fiber KVM extender

Extends keyboard, video, and mouse signals up to 33,000 feet away

Supports DVI and VGA video at resolutions up to 1600 x 1200

Supports PC or USB

Single or Dual models

Easily adapted to your system

Features and Benefits

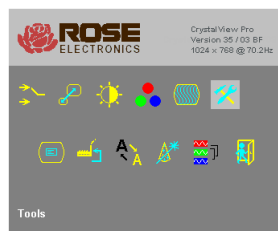
- Supports:
 - DVI and VGA video modes
 - PS/2 and USB keyboards and mice
 - Full stereo audio (optional for speakers & mic)
 - Serial (optional)
- Extend a KVM station from a CPU using fiber cable:
 - (MultiMode) 62.5-micron cable up to 650 feet
 - (MultiMode) 50-micron cable up to 1,300 feet
 - (SingleMode) 9-micron cable up to 33,000 feet
- Video resolutions up to 1600 x 1200 @ 60Hz
- Flexible modular architecture
- Compatible with Rose Electronics KVM switches such as ServeView Pro, UltraView Pro, and UltraMatrix
- Compatible with Windows, Windows NT, OS/2, Unix, Linux, and other operating systems
- Uses a microprocessor to emulate the keyboard and mouse. The keyboard and mouse on the receiver unit do not have to be connected for the PC to boot; only the transmitter must be connected to the PC.
- Fully automatic KVM sharing (Local access models)
- Only two fibers needed
- Digital OSD setup menu
- 1U rack mount kits – 19", 23", or 24"

The CrystalView Pro *fiber*™ Advantage.

The CrystalView Pro fiber is the KVM extender of choice for businesses that need to extend and operate a computer, server, or KVM switch from a great distance. The CrystalView Pro fiber makes this possible by the use of standard fiber optic cable. You can fully operate and control a computer or server from as far away as 33,000 feet using 9-micron fiber cable (SingleMode).

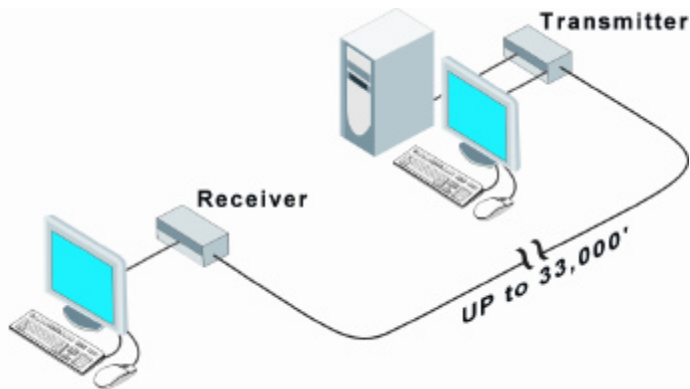
The CrystalView Pro fiber supports both DVI video as well as analog VGA video. All combinations of DVI and VGA video cards and monitors are supported. The OSD features make it easy to adjust all the necessary device parameters, color, brightness, contrast, and saturation. Using fiber cable, you can extend the distance between the transmitter and receiver further than with conventional CAT5 cable. In addition, fiber cable is unaffected by electromagnetic interference, keeping your data safe from interference from lightning and over voltage transients.

The modular architecture makes the CrystalView Pro fiber easily adapted to your system. PS/2, SUN, and USB peripherals are supported. CAT5, Multi-Mode and SingleMode fiber cabling, serial for touchscreens and stereo audio, parallel for printers, and 10BaseT Ethernet are also supported as options.



On-screen display

Typical Application



Accessing a computer from two locations, one is local, the other is 33,000 feet away

CrystalView Pro fiber basics: The CrystalView Pro fiber consists of a transmitter that connects to a PC, server, or KVM switch and a receiver that connects to a keyboard, monitor, and mouse, or a KVM switch. The transmitter and receiver units are connected together with up to 33,000 feet of standard 9-micron optical fiber cable.

The ideal way to apply the CrystalView Pro fiber is to connect the transmitter to a Rose Electronics KVM switch. Expanding the switch allows the receiver to access up to 1,000 computers or servers. The Rose KVM switch can be connected between the transmitter and computers, the KVM station and the receiver unit, or both.

Installation: Installing the CrystalView Pro fiber unit is as easy as connecting the KVM station to the receiver, connecting the CPU to the transmitter, and connecting the transmitter to the receiver with fiber cable.

Models: The CrystalView Pro fiber is available in different models with PC, SUN, and USB support. The PC model is available in a dual version allowing for a second KVM station next to the PC, providing operation from the transmitter or the receiver unit. A rack version, containing 10 transmitters or receivers is also available.

Keyboard and mouse emulation The CrystalView Pro fiber uses a microprocessor to emulate the keyboard and mouse. This means that the keyboard and mouse on the receiver do not have to be connected for the PC to boot. Only the Transmitter must be connected to the PC.

Rack Assembly The CrystalView Pro fiber can be ordered in a 10-unit rack assembly with several options available.

Part Numbers

CRK-xDFyzDVI x = 1-single access, 2-dual access
y = M-MultiMode, S-SingleMode
z = P-PC, U-USB

-RK10 part number suffix = 10 unit rack (Transmitters)
-RK10R part number suffix = 10 unit rack (Receivers)
-ERK part number suffix = externally powered rack card
-IRK part number suffix - internally powered rack card
/AUD part number suffix = Audio & serial option
RM-UMnn Rack mount kit (nn = 19", 23", or 24")

Specifications

Dimensions	8.8W x 6.3D x 1.75H (in.) 224W x 160D x 445H (mm)
Weight	3.3 lbs / 1.5 kg (each unit)
Operating Temp	10° C - 45° C / 50° F - 113° F
Humidity	80% max, non-condensing
Resolution	Up to 1600 x 1200 @ 60Hz
Connectors	Video – DVI PC -Keyboard/Mouse – MiniDin6 (2) USB – Keyboard/Mouse – Type A/B Power – 4-Pin square Program – RJ22 Serial – DB9M Audio – 3.5mm stereo jack (2)
Wavelength / Power	(MultiMode) – 850nm / 70-400µw (SingleMode) – 1300nm / 180-2000µw



DUAL MODEL WITH AUDIO / SERIAL



DUAL MODEL / 10 UNIT RACK