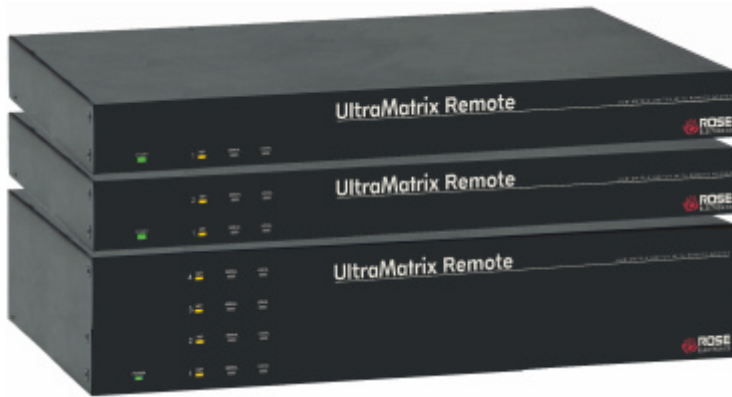


UltraMatrix Remote™



Matrix KVM switch with remote access

System-wide connectivity locally or over IP from any workstation connected to your network

Connects 1,000 computers to multiple user stations

High quality video up to 1280 x 1024

Secure encrypted operation with login and computer access control

Scaling, scrolling, and auto-size features

Features and Benefits

- Connect to remote computers locally or over IP via Ethernet
- Video resolution up to 1280 x 1024
- Security system with login, computer access control and data encryption
- Powerful and expandable to 1,000 computers
- Scaling, scrolling, auto-size, and quad screen features
- Pull-down menus allow you to easily switch to servers by location and name
- Single mouse cursor system allows easy switching between your local workstation and the remote computer
- Serial VT220 terminal emulation for access to Unix hosts, routers, and other supported serial devices
- Advanced on-screen display (OSD) makes configuration and computer switching easy
- Multi-lingual OSD (English, French, German, Spanish, Italian, and Portuguese)
- Status screen shows current connections, computer power, and other information
- Supports PS/2, PS/2 wheel, USB, and Sun
- Supports HV sync, composite sync, and sync-on-green video
- Serial access for computer switching, unit configuration, flash memory upgrades and reset to factory defaults
- Flash memory technology with free, lifetime upgrades of product firmware
- Up to 4 local user ports and 4 remote user ports are available. Simultaneous local and remote access must be on different ports. (2 local users on ports 1 and 2; 2 remote users on ports 3 and 4)
- Expansion cards allow for connecting multiple units together in an expanded configuration giving access to as many as 1,000 CPUs or servers
- Rack mountable chassis (1U or 2U)

The UltraMatrix Remote™ Advantage . . .

The UltraMatrix Remote is the next generation of KVM switches. It not only provides a comprehensive solution for remote server console access, this access can be locally or from any workstation on your network over IP via Ethernet.

The UltraMatrix Remote saves physical space, reduces clutter, streamlines access, improves security, and lowers power costs by reducing excess keyboards, mice, and monitors.

The powerful, advanced on-screen display can be used to:

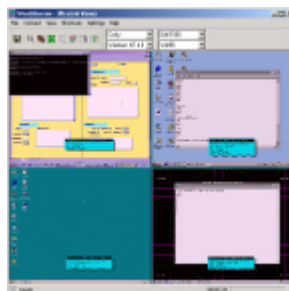
- Configure the unit
- Name the computers
- Organize the computers into common groups
- Select a computer by name to access
- View the computer connections and status
- Customize the appearance

When accessing a computer over your network, the remote computer's video is digitized and the unit scales, compresses, encrypts, and packetizes it into the TCP/IP protocol. At the network workstation, the Viewer application receives and displays the video and sends back keyboard and mouse data. This process allows you to access the remote computers from anywhere, locally, across your network, or around the world.

The UltraMatrix Remote can easily be expanded to other KVM switches to make a seamless and truly scalable KVM matrix switch. Networking communication technology is used to reduce cost, eliminate single points of failure, and increase reliability.

The Viewer program is designed to simplify access to the remote computers. Once connected, the pull-down menu lists the attached computers. Select the remote computer to connect to and you will see a beautiful, high-quality image of the remote computer. Your keyboard and mouse now control the remote computer.

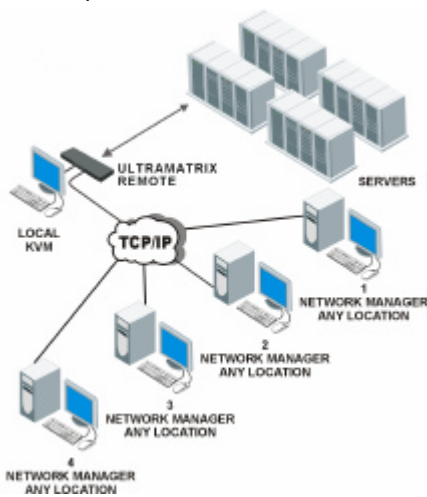
The UltraMatrix Remote uses flash memory technology. Upgrades and product enhancements are easily done by obtaining these from our web site at www.rose.com.



Quad screen view

Typical Application

Access computers or servers over the network



Introduction – The UltraMatrix Remote is a versatile and powerful product that extends the range of access to your computers to anywhere in the world. Its user friendly interface and powerful on-screen display makes managing your computers easier and more efficient. With the UltraMatrix Remote's expansion capability, the number of computers that can be remotely accessed is up to 1,000.

Models – The UltraMatrix Remote is available in several different models. All models are fully expandable in multiple configurations giving the users access to as many as 1,000 computers.

See part numbers.

Security – System security can be configured to give access to multiple users, each with a unique user ID and password. Each user can be granted access to certain computers and restricted from others. There are four view modes that can be assigned to each user; view, share, control, and private. This gives the flexibility of allowing certain users full access or just view capabilities. All transmissions to and from the remote computer are encrypted for added security.

On-screen display – The UltraMatrix Remote excels with its on-screen display (OSD) technology. The intuitive interface uses drop-down lists of computers to connect to and pop-up menus to configure the unit. User-friendly help lines explain each selected item. CPU names, security, appearance, screen saver and many other features are easily configured. You can use the OSD to connect to computers by name, view the system connections, and observe system status in real time. The interface can be programmed for English, French, German, Spanish, Italian, or Portuguese.

Installation – The UltraMatrix Remote is easy to install and configure. The installation consists of two procedures, install the unit and install the Viewer software. To install the unit, simply connect your Ethernet network, your computers and a local KVM station to the units corresponding rear panel connectors, and assign an IP address to the unit. Next install the Viewer software on a Windows based workstation on your network. Connect to the UltraMatrix Remote using the Viewer and complete the installation and configuration.

Operation – The Viewer program is used to remotely access the computers or servers connected to the UltraMatrix Remote. You can connect to a computer using simple keyboard commands or an on-screen list of computers. Once a computer is selected and connected, the workstation can fully control, update, maintain and configure the computer or server.

Flash memory – To support the latest devices and provide product enhancements and features, the UltraMatrix Remote contains flash memory. Free, lifetime firmware updates are available from our web site at www.rose.com.

Serial devices – Any CPU port on the UltraMatrix remote can be configured to be serial. Once configured, the OSD is so powerful that when you switch to that CPU port it converts to a color VT220 terminal emulator for that port. When you connect to a serial device, you get a 24x80 screen with two status lines. You can access the serial device just as if you were connected with a terminal.

Keyboard and mouse – The UltraMatrix Remote fully emulates the keyboard and mouse. You can use any combination of PS/2, USB, Sun, PS/2 wheel, and serial mice. USB (PC, Apple, and Sun) and serial mouse are for the computer side only, not the KVM side. It is compatible with all major operating systems such as Windows, Solaris, Linux, Unix, SGI, and OSX.

Part Numbers

PC models	Remote Users*	Local Users	# of CPUs	Multi-Platform	Remote Users*	Local Users	# of CPUs
RP2-1R1X8U	1	1	8	RE2-1R1X8U	1	1	8
RP2-1R1X16U	1	1	16	RE2-1R1X16U	1	1	16
RP2-1R2X8U	1	2	8	RE2-1R2X8U	1	2	8
RP2-1R2X16U	1	2	16	RE2-1R2X16U	1	2	16
RP2-2R2X8U	2	2	8	RE2-2R2X8U	2	2	8
RP2-2R2X16U	2	2	16	RE2-2R2X16U	2	2	16
RP4-1R4X16U	1	4	16	RE4-1R4X16U	1	4	16
RP4-2R4X16U	2	4	16	RE4-2R4X16U	2	4	16
RP4-4R4X16U	4	4	16	RE4-4R4X16U	4	4	16
RM-UBnn	Rackmount kit (1U chassis) nn= 19", 23", or 24"						
RM-UCnn	Rackmount kit (2U chassis) nn= 19", 23", or 24"						

* One user, local or remote, per slot (same KVM port.)

/E part number suffix = expansion card option - /E2 = 2 expansion cards

Specifications

Dimensions / Weight

#CPU ports	Width	Depth	Height	Weight
8	12.0" / 30.5cm	16.7" / 42.4cm	1.75" / 4.5cm	9.0lbs / 4.1kg
16	12.0" / 30.5cm	16.7" / 42.4cm	3.50" / 9.0cm	11.0lbs / 5.0kg

Power 90-240VAC - Auto switching, 130 Watts

Connectors Power – IEC320 standard receptacle

CPU/KVM – DB25F

Expansion – DB15M/F

RS232 – RJ12 (6-pin)

Network – RJ45

Video bandwidth 150MHZ

Chassis Electro galvanized steel, black powder coated

Controls Power on/off switch

Indicators LEDs: Power, Select, CPU power

Environment 0 – 45 °C, 5% - 80% non-condensing RH

Approvals FCC, VCCI, UL, cUL, TUV, CE



1X8, 2X8, 4X16 (1X8 shown with optimal expansion cards installed)

Rose Electronics 10707 Stancliff Road, Houston, Texas 77099 USA
281-933-7673 800-333-9343 (USA) +44 (0) 1264 850574 (Europe) +65 6324 2322(Far East)

 **ROSE**
ELECTRONICS
WWW.ROSE.COM